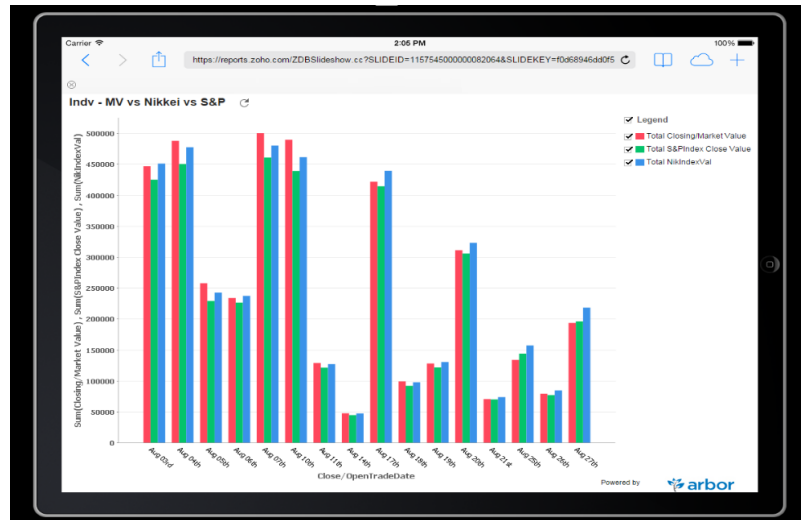


# Arbor Reporting Portal

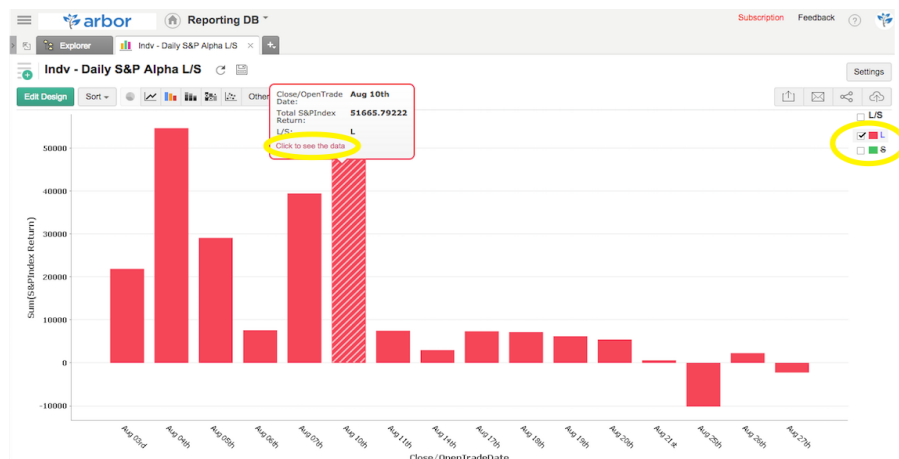
## Introduction



Arbor Reporting Portal allows users to create custom reports, using data sets of the users' choice, and to distribute this for both internal and external use. Users can make these reports accessible to anyone they entitle, including marketers, potential investors, and other external parties. Our Reporting Portal can be used on a range of platforms: computers, tablets, and mobile phones.

## Data Reporting & Interactivity

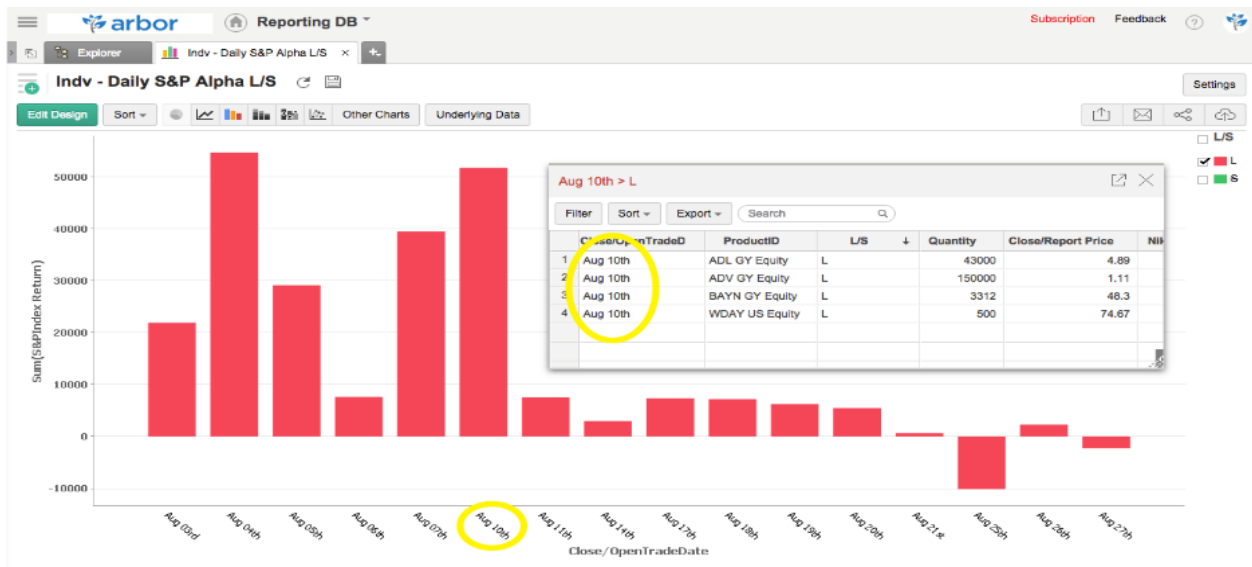
Users can enhance the depth of data available on these reports through incorporating new data provided by clients, such as market data, benchmark performances and index prices.



These reports are interactive, enabling the users and their recipients to perform in-depth analysis on each report. For instance, in example above, you can choose to display or hide a parameter in a report by checking / un-checking the text box.

## Data Drill Down

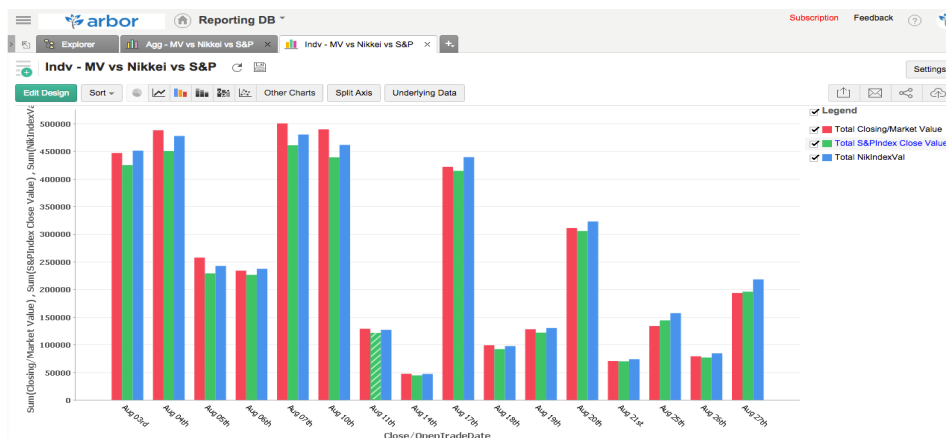
Users can also drill down for data summaries of the graphs. On computers, users can view this by hovering their cursors over the graph of interest, while users on tablets simply need to click on the graph.



## Reporting Design

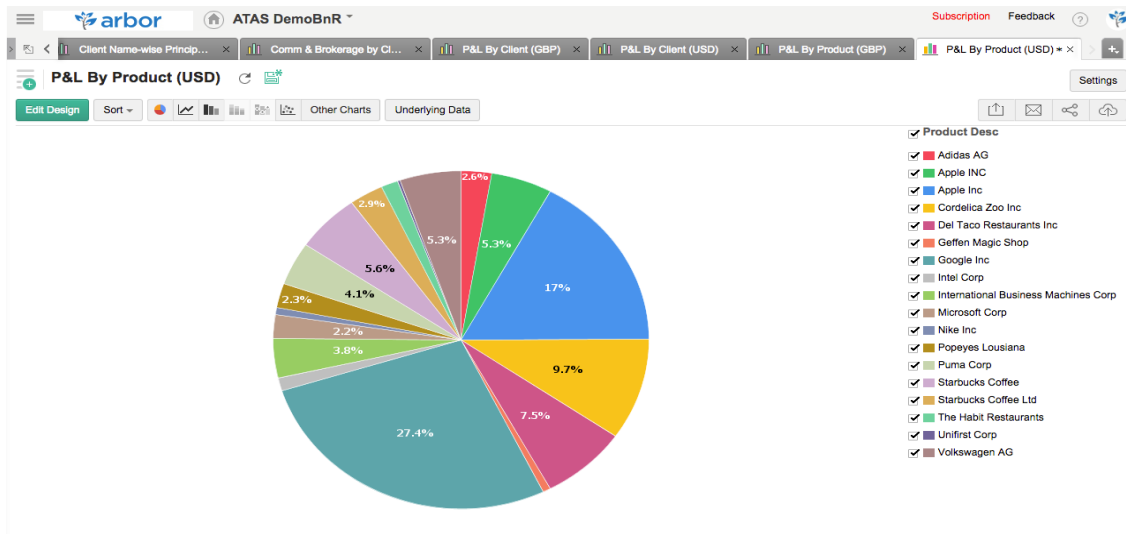
Our portal offers numerous graphs designs, enabling you to create a report that best suits your data. Here are some samples of our stylish and interactive reports.

## Bar Chart (Fund vs Index Performance)



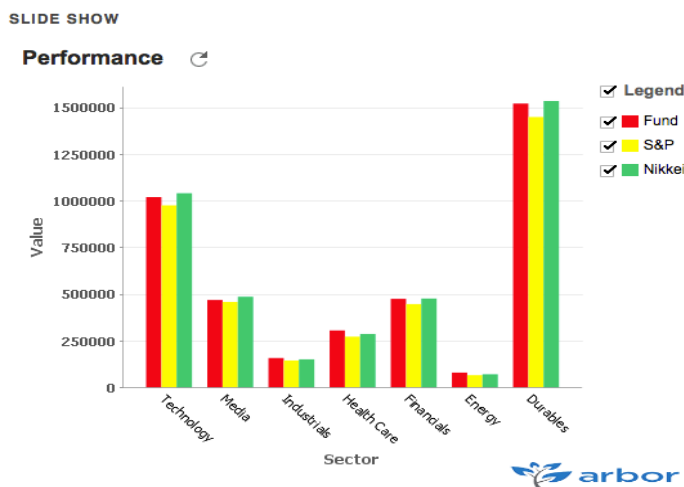
This chart shows the performance of our demo fund compared with the selected benchmark(s) for August 2015. In this case, we compare the performance of our demo fund with a Japanese index (Nikkei) and an American index (S&P 500). This allows you to view the performances and analyze the trades, which occur within this timeframe.

### Pie Chart (P&L distribution grouped by client)



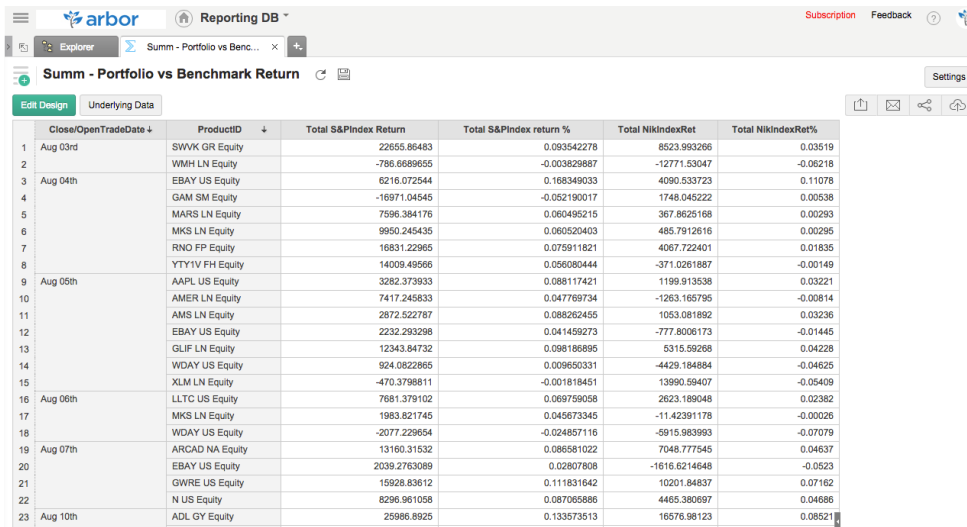
This broker dealer report shows the level of P&L that each product generates. With this graph, we can see a comprehensive breakdown of this firm’s profit for the month, with the data grouped by each individual product’s contribution.

### Slide Show



Users can also create slideshows, which establishes a flexible reporting interface for mobile phone, PC and tablet users. Slideshows can easily be shared via URL, and are fully customizable.

## Fund Analytics

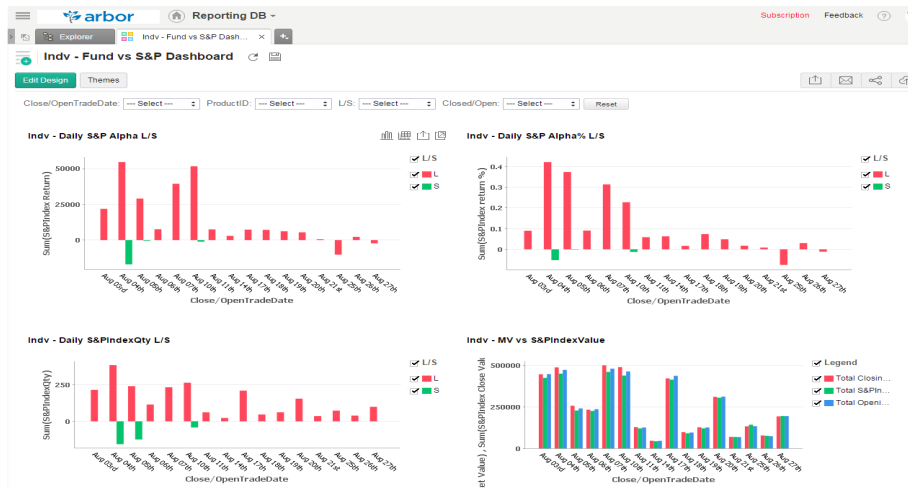


| Close/OpenTradeDate | ProductID       | Total S&PIndex Return | Total S&PIndex return % | Total NikindexRet | Total NikindexRet% |
|---------------------|-----------------|-----------------------|-------------------------|-------------------|--------------------|
| Aug 03rd            | SWWK GR Equity  | 22655.86483           | 0.093542278             | 8523.993266       | 0.03519            |
|                     | WMH LN Equity   | -786.6689655          | -0.003829887            | -12771.53047      | -0.06218           |
| Aug 04th            | EBAY US Equity  | 6216.072544           | 0.168349033             | 4090.533723       | 0.11078            |
|                     | GAM SM Equity   | -16971.04545          | -0.052190017            | 1748.045222       | 0.00538            |
|                     | MARS LN Equity  | 7596.384176           | 0.060495215             | 367.8626168       | 0.00293            |
|                     | MKS LN Equity   | 9950.245435           | 0.060520403             | 485.7912616       | 0.00295            |
|                     | RNO FP Equity   | 16831.22965           | 0.075911821             | 4067.722401       | 0.01835            |
|                     | YTYIV FH Equity | 14009.49566           | 0.056080444             | -371.0261867      | -0.00149           |
| Aug 05th            | AAPL US Equity  | 3282.373933           | 0.088117421             | 1199.913538       | 0.03221            |
|                     | AMER LN Equity  | 7417.245833           | 0.047769734             | -1263.166795      | -0.00814           |
|                     | AMS LN Equity   | 2872.522787           | 0.088262455             | 1053.081892       | 0.03236            |
|                     | EBAY US Equity  | 2232.293298           | 0.041459273             | -777.8006173      | -0.01445           |
|                     | GLIF LN Equity  | 12343.84732           | 0.098186895             | 5315.59296        | 0.04228            |
|                     | WDAY US Equity  | 924.0822865           | 0.009650331             | -4429.194884      | -0.04625           |
|                     | XML LN Equity   | -470.3798811          | -0.001818451            | 13990.59407       | -0.05409           |
| Aug 06th            | LLTC US Equity  | 7681.379102           | 0.069759058             | 2623.189046       | 0.02382            |
|                     | MKS LN Equity   | 1983.821745           | 0.045673345             | -11.42391178      | -0.00026           |
|                     | WDAY US Equity  | -2077.229654          | -0.024857116            | -5915.963993      | -0.07079           |
| Aug 07th            | ARCAD NA Equity | 13160.31532           | 0.086581022             | 7048.77545        | 0.04637            |
|                     | EBAY US Equity  | 2039.2763089          | 0.02807808              | -1616.6214648     | -0.0523            |
|                     | GWRE US Equity  | 15928.83612           | 0.111831642             | 10201.84837       | 0.07162            |
|                     | N US Equity     | 8296.961058           | 0.087065886             | 4465.380697       | 0.04686            |
| Aug 10th            | ADL GY Equity   | 25986.8925            | 0.133573513             | 16576.98123       | 0.08521            |

Our reporting also supports a tabular view, which is a great tool for viewing fund performances and analytics. Users can see their fund summary, which can be grouped or ordered by customizable parameters. This helps users to view the most relevant analytics across time periods.

Below is an example of a report, comparing how well a portfolio measures against S&P 500 and the Nikkei Index over time”

## Dashboard





In the dashboard, you can pool your reports together neatly. On top of this, you can efficiently filter these reports, using relevant parameters, such as L/S, trade date and product ID.

### Customization and Support

These reports can be sent both to you and to whomever else you want, including potential investors, custodians, prime brokers and administrators. Additionally, they can be sent as regularly as you wish, and within any reporting timeframe (MTD, QTD, etc.). Our interfaces team and analysts will help you create the perfect reports for your needs.

### Demo Login

To request demo credentials, please complete and submit the contact form on the right hand side of this page. We'll be in touch with you shortly. For more information about Arbor Reporting Portal, please contact us at [enquiries@arborfs.com](mailto:enquiries@arborfs.com).