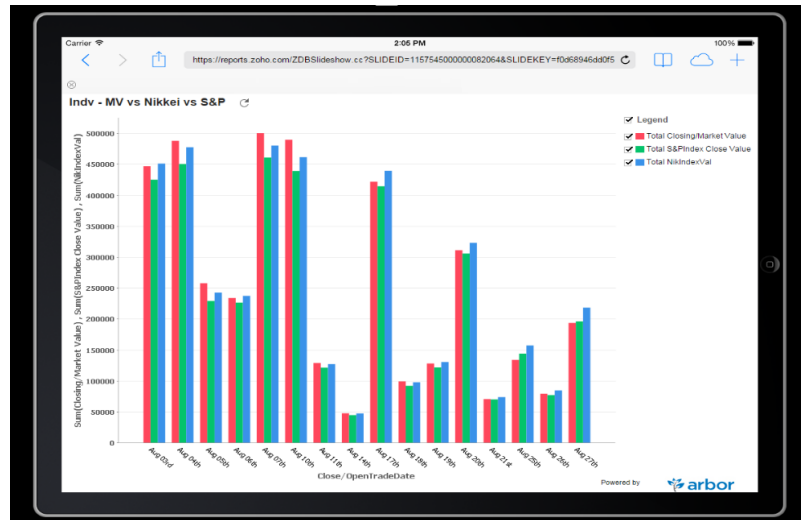


Arbor Reporting Portal

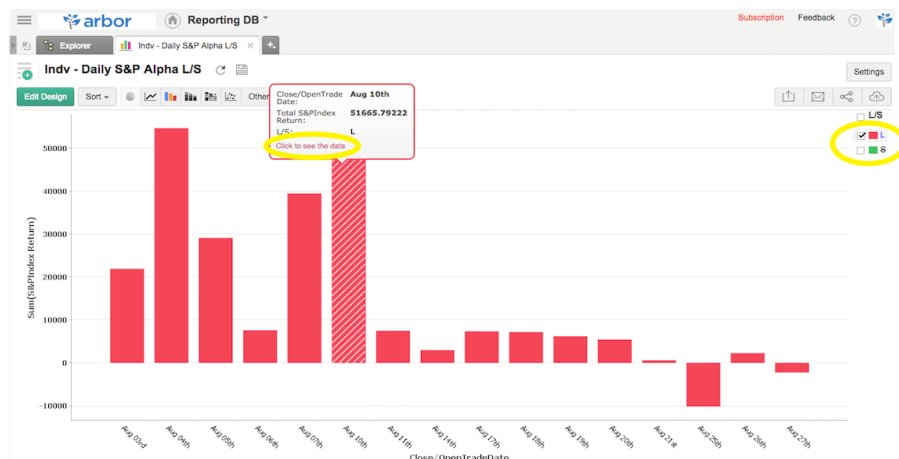
Introduction



Arbor Reporting Portal allows users to create custom reports, using data sets of the users' choice, and to distribute this for both internal and external use. Users can make these reports accessible to anyone they entitle, including marketers, potential investors, and other external parties. Our Reporting Portal can be used on a range of platforms: computers, tablets, and mobile phones.

Data Reporting & Interactivity

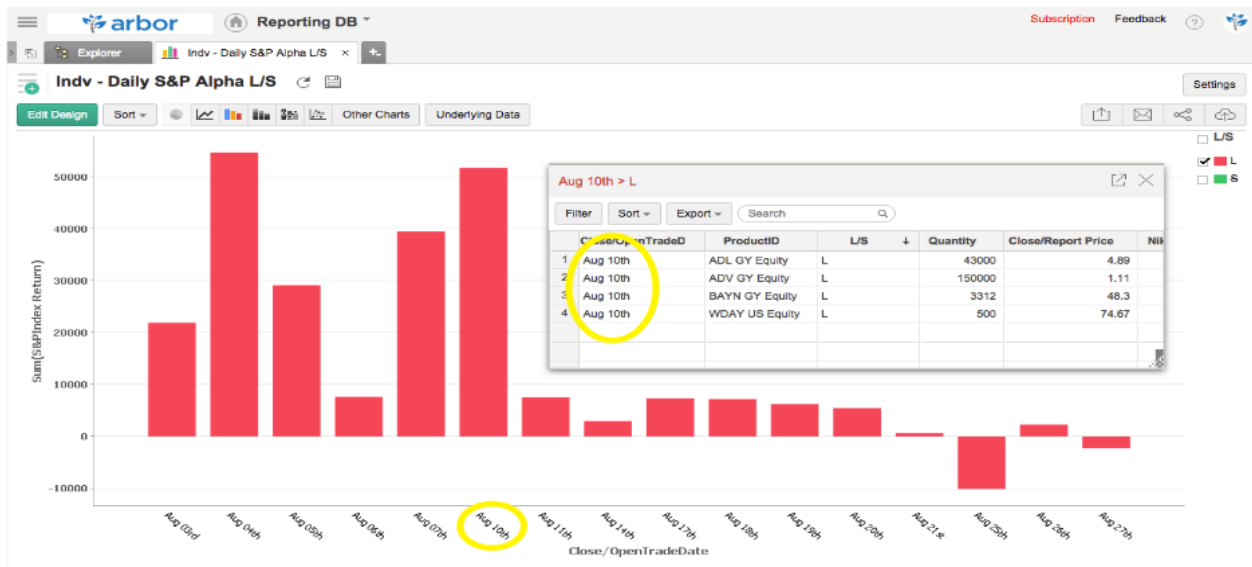
Users can enhance the depth of data available on these reports through incorporating new data provided by clients, such as market data, benchmark performances and index prices.



These reports are interactive, enabling the users and their recipients to perform in-depth analysis on each report. For instance, in example above, you can choose to display or hide a parameter in a report by checking / un-checking the text box.

Data Drill Down

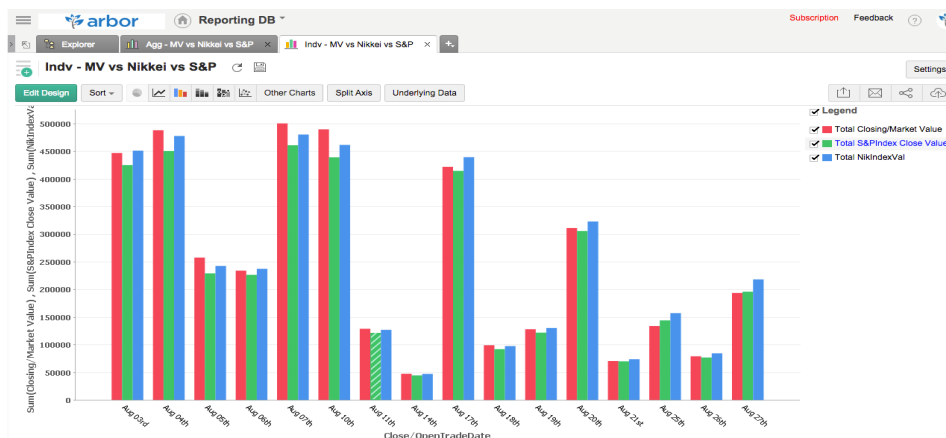
Users can also drill down for data summaries of the graphs. On computers, users can view this by hovering their cursors over the graph of interest, while users on tablets simply need to click on the graph.



Reporting Design

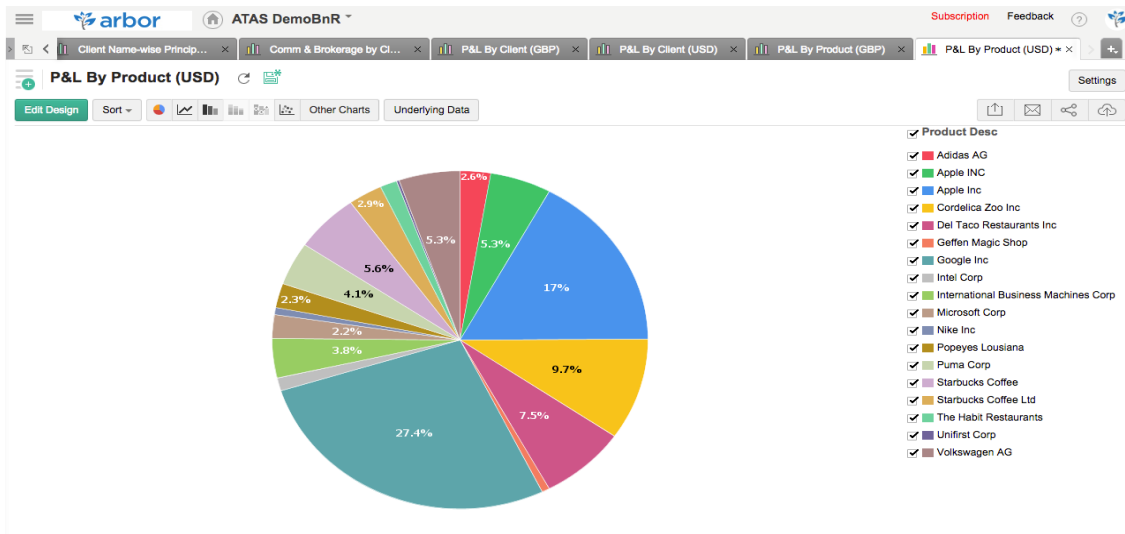
Our portal offers numerous graphs designs, enabling you to create a report that best suits your data. Here are some samples of our stylish and interactive reports.

Bar Chart (Fund vs Index Performance)



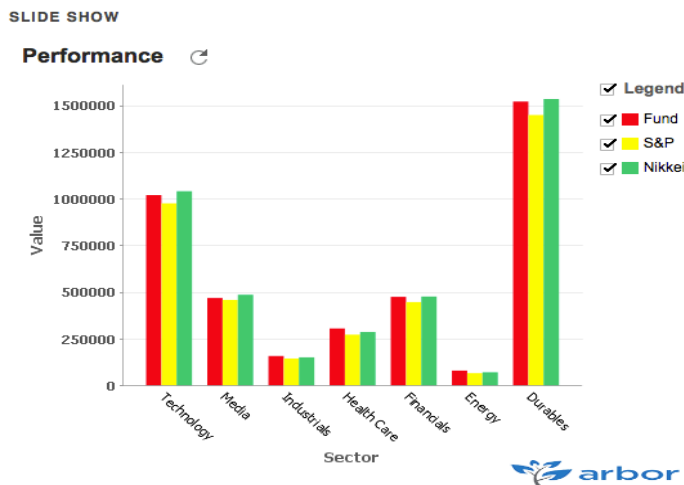
This chart shows the performance of our demo fund compared with the selected benchmark(s) for August 2015. In this case, we compare the performance of our demo fund with a Japanese index (Nikkei) and an American index (S&P 500). This allows you to view the performances and analyse the trades, which occur within this timeframe.

Pie Chart (P&L distribution grouped by client)



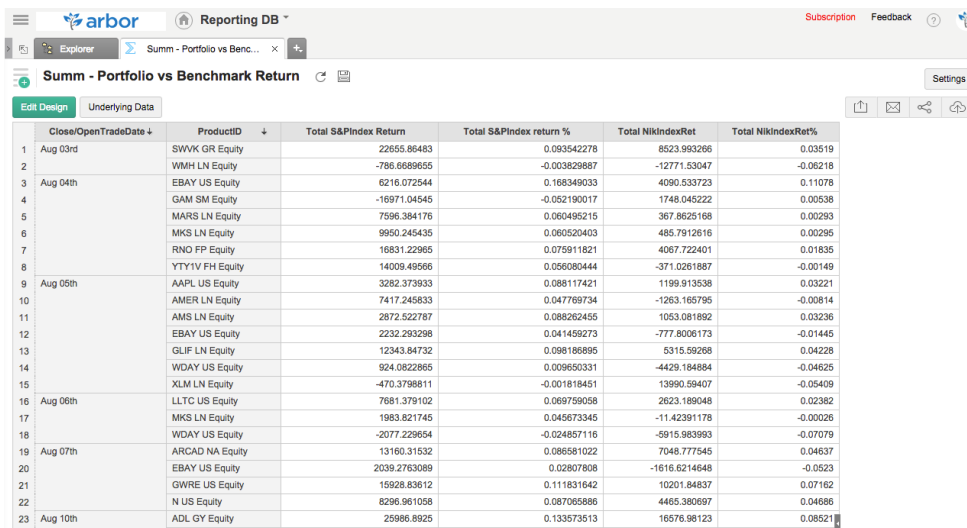
This broker dealer report shows the level of P&L that each product generates. With this graph, we can see a comprehensive breakdown of this firm’s profit for the month, with the data grouped by each individual product’s contribution.

Slide Show



Users can also create slideshows, which establishes a flexible reporting interface for mobile phone, PC and tablet users. Slideshows can easily be shared via URL, and are fully customisable.

Fund Analytics

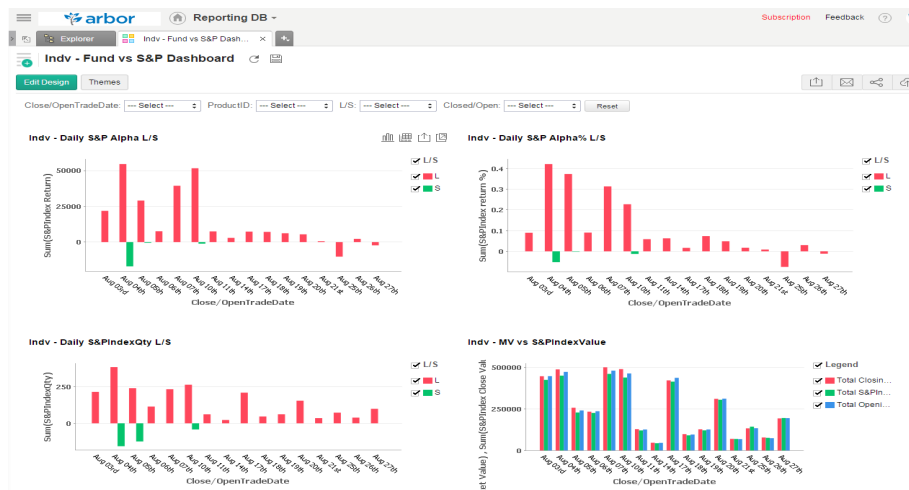


Close/OpenTradeDate	ProductID	Total S&PIndex Return	Total S&PIndex return %	Total NikindexRet	Total NikindexRet%
Aug 03rd	SWWK GR Equity	22655.86483	0.093542278	8523.993266	0.03519
	WMH LN Equity	-786.6689655	-0.003829887	-12771.53047	-0.06218
Aug 04th	EBAY US Equity	6216.072544	0.168349033	4090.533723	0.11078
	GAM SM Equity	-16971.04545	-0.052190017	1748.045222	0.00538
	MARS LN Equity	7596.384176	0.060495215	367.8625168	0.00293
	MKS LN Equity	9950.245435	0.060520403	485.7912616	0.00295
	RNO FP Equity	16831.22965	0.075911821	4067.722401	0.01835
	YTYIV FH Equity	14009.49566	0.056080444	-371.0261867	-0.00149
Aug 05th	AAPL US Equity	3282.373933	0.088117421	1199.913538	0.03221
	AMER LN Equity	7417.245833	0.047769734	-1263.165795	-0.00814
	AMS LN Equity	2872.522787	0.088262455	1053.081892	0.03236
	EBAY US Equity	2232.293298	0.041459273	-777.8006173	-0.01445
	GLIF LN Equity	12343.84732	0.098186895	5315.59296	0.04228
	WDAY US Equity	924.0822865	0.009650331	-4429.194884	-0.04625
	XML LN Equity	-470.3798811	-0.001818451	13990.59407	-0.05409
Aug 06th	LLTC US Equity	7681.379102	0.069759058	2623.189046	0.02382
	MKS LN Equity	1983.821745	0.045673345	-11.42391178	-0.00026
	WDAY US Equity	-2077.229654	-0.024857116	-5915.963993	-0.07079
Aug 07th	ARCAD NA Equity	13160.31532	0.086581022	7048.77545	0.04637
	EBAY US Equity	2039.2763089	0.02807808	-1616.6214648	-0.0523
	GWRE US Equity	15928.83612	0.111831642	10201.84837	0.07162
	N US Equity	8296.961058	0.087065886	4465.380697	0.04686
Aug 10th	ADL GY Equity	25986.8925	0.133573513	16576.98123	0.08521

Our reporting also supports a tabular view, which is a great tool for viewing fund performances and analytics. Users can see their fund summary, which can be grouped or ordered by customisable parameters. This helps users to view the most relevant analytics across time periods.

Below is an example of a report, comparing how well a portfolio measures against S&P 500 and the Nikkei Index over time”

Dashboard





In the dashboard, you can pool your reports together neatly. On top of this, you can efficiently filter these reports, using relevant parameters, such as L/S, trade date and product ID.

Customisation and Support

These reports can be sent both to you and to whomever else you want, including potential investors, custodians, prime brokers and administrators. Additionally, they can be sent as regularly as you wish, and within any reporting timeframe (MTD, QTD, etc.). Our interfaces team and analysts will help you create the perfect reports for your needs.

Demo Login

To request demo credentials, please complete and submit the contact form on the right hand side of this page. We'll be in touch with you shortly. For more information about Arbor Reporting Portal, please contact us at enquiries@arborfs.com.